

“Cross-border cooperation on infectious disease control: EMRIC+ project results”

Henriëtte ter Waarbeek



provincie limburg



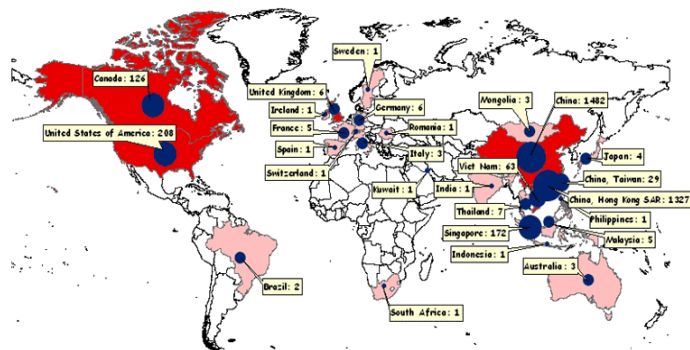
Cross-border cooperation on infectious disease control: EMRIC+ project results

Maastricht, 29 November 2013, EMRIC+/Symposium I



SARS : Cumulative Number of Reported Probable* Cases

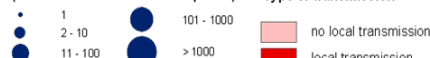
Total number of cases: 3461 as of 18 April 2003, 15:00 GMT+2



*Due to differences in the case definitions being used at a national level, probable cases are reported by all countries except the United States of America, which is reporting suspected cases under investigation.

Cumulative number of Reported Cases
(From 1 November 02 to 18 April 03)

Type of transmission

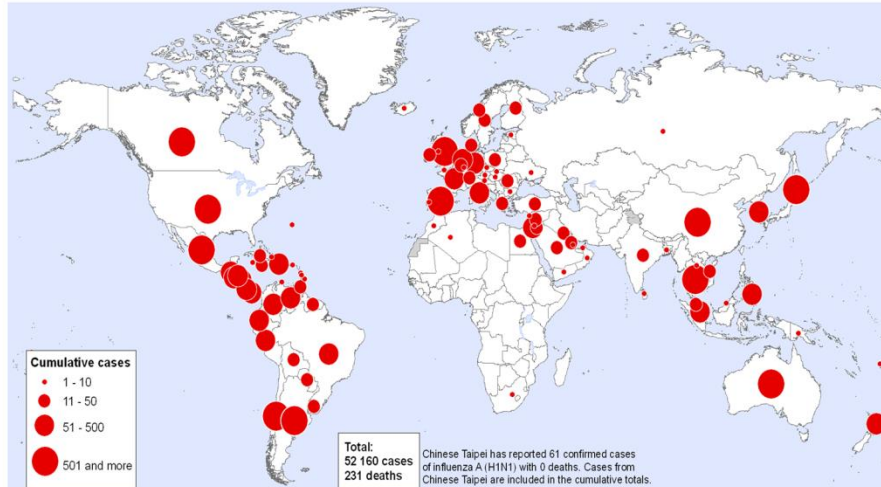


Data Source: World Health Organization
Map Production: Public Health Mapping Team
Communicable Diseases (CDS)
© World Health Organization - April 2003

New Influenza A (H1N1),

Number of laboratory confirmed cases as reported to WHO

Status as of 22 June 2009
06:00 GMT



The boundaries and names shown and the designations used on this map do not imply the expression of any opinion whatsoever on the part of the World Health Organization concerning the legal status of any country, territory, city or area or of its authorities, or concerning the delimitation of its frontiers or boundaries. Dotted lines on maps represent approximate border lines for which there may not yet be full agreement.

Data Source: World Health Organization
Map Production: Public Health Information
and Geographic Information Systems (GIS)
World Health Organization



© WHO 2009. All rights reserved

Map produced: 22 June 2009 06:55 GMT

To prevent, protect against, control and provide a public health response to the international spread of disease in ways that are commensurate with and restricted to public health risks, and which avoid unnecessary interference with international traffic and trade.



International Health Regulations,
article 2, 2005

Published Date: 2011-05-23 19:35:41

Subject: PRO/AH/EDR> E. coli VTEC - Germany

E. COLI VTEC – GERMANY

Public health officials in northern Germany are trying to trace the origins of an outbreak of life-threatening diarrhea which has infected around 80 people, putting many of them in intensive care.

"We have a clearly unusual situation," said Gerard Krause of the Robert Koch health authority responsible for epidemiology.

There are around 25 confirmed cases in Lower Saxony and Bremen, while another 20 people are infected in each of Schleswig-Holstein and Hamburg. Hesse authorities have registered 16 suspected cases, while 4 more people are thought to have been infected in Mecklenburg-Western Pomerania. Most of those infected are being treated in hospitals.

Eurosurveillance, Volume 17, Issue 21, 24 May 2012

Rise in the number of notified human hantavirus infections since October 2011 in Baden-Württemberg, Germany

I Boone, C Wagner-Wiening, D Reil, J Jacob, U M Rosenfeld, R G Ulrich, D Lohr, G Pfaff

From October 2011 to April 2012, 852 human hantavirus infections were notified in Germany, of which 580 (68%) were in Baden-Württemberg. Case numbers started to rise earlier than they did before the previous outbreaks in 2007 and 2010, and are the largest ever reported in this state during October to April of any year. The early rise could be due to a beech mast year in 2011, followed by an early and massive reproduction of the reservoir bank vole populations during winter 2011 and spring 2012.

Eurosurveillance, Volume 15, Issue 2, 14 January 2010

Preliminary case report of fatal anthrax in an injecting drug user in North-Rhine-Westphalia, Germany, Dec 09

D Radun , H Bernard, M Altmann, I Schöneberg, V Bochat, U van Treeck, R M Rippe, R Grunow, M Elschner, W Biederbick, G Krause

A fatal case of anthrax occurred in an injecting drug user in Germany, in December 2009. A potential link to similar cases in Scotland in the same time period is currently under investigation.

Joint ECDC and EMCDDA, Rapid Risk Assessment, 22 June 2012

Anthrax cases among injecting drug users Germany

Outbreaks of anthrax infection among IDUs are rare. The most recently reported outbreak occurred in Scotland where between December 2009 and July 2010, 119 cases of anthrax following heroin injection, were reported. This was investigated in October 2010. That outbreak also acquired European dimensions as two confirmed cases were identified in Germany (**city of Aachen**) as well as one probable case detected serologically (city of Passau, Bavaria).

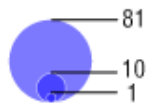
Tijdschr Infect 2011;6:133-41

Mumps outbreak among vaccinated students in university towns in The Netherlands

H.L.G. ter Waarbeek, C.J.P.A. Hoebe, C.M. Swaan, R.S. van Binnendijk en S.J.M. Hahné

Bof 1 september 2011 - 31 augustus 2012
per gemeente, N=509*

Aantal



• Studentenstad

— GGD-regio's



*waarvan 3 niet opgenomen in de kaart,
i.v.m. ontbrekende gegevens

Bron: Osiris

www.zorgatlas.nl



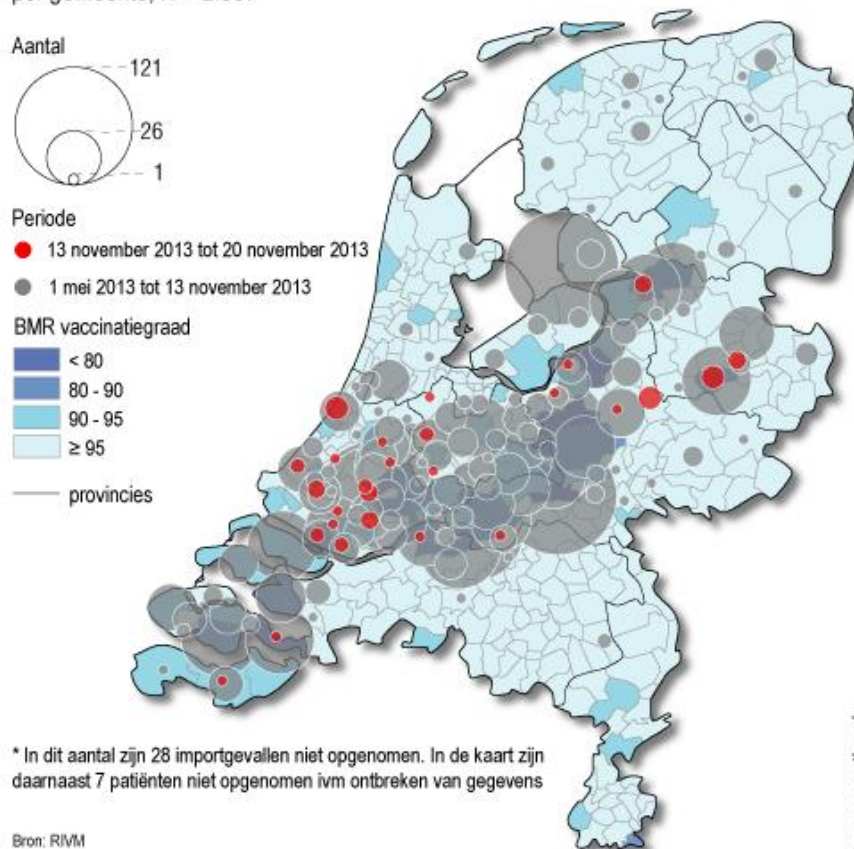
Eurosurveillance, Volume 18, Issue 36, 05 September 2013

Large ongoing measles outbreak in a religious community in the Netherlands since May 2013

M J Knol, A T Urbanus, E M Swart, L Mollema, W L Ruijs, R S van Binnendijk, M J te Wierik, H E de Melker, A Timen, S J Hahné

Mazelen 1 mei 2013 tot 20 november 2013

per gemeente, N = 2.367*



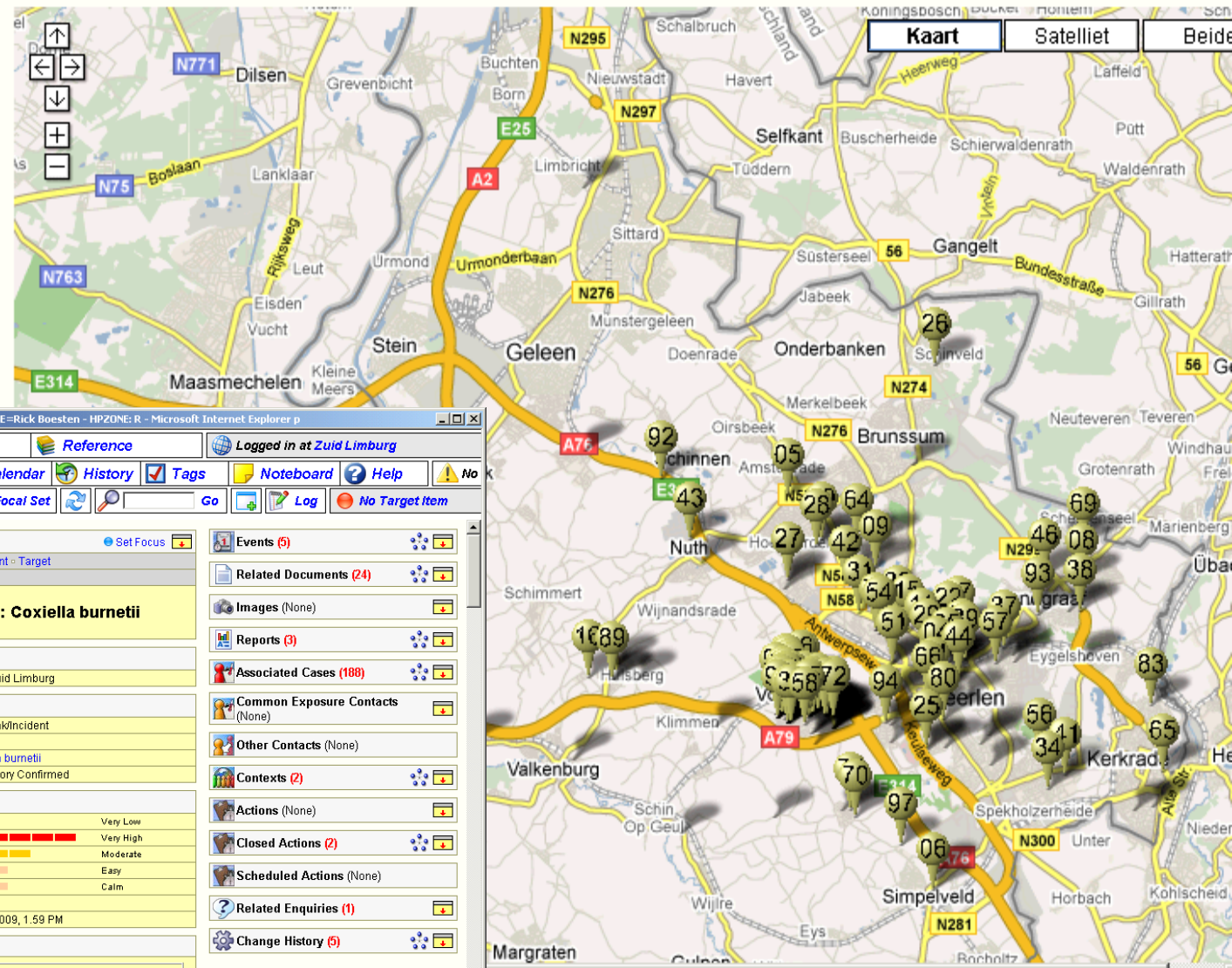
A local outbreak of infections with EHEC-O157:H7 associated with the consumption of raw meat products, June 2012, Limburg, Belgium

November 2012, EU-RL workshop VTEC

The fact that 19 cases of infection with the bacterium *E. coli* O157 have been detected in Limburg was reported Thu 14 Jun 2012, by the Federal Agency for the Safety of the Food Chain (AFSCA) after being alerted by the Department of the Public Health Monitoring in Hasselt. All cases would be related to the ingestion of raw meat, American style fillet. Of these 19 cases, 3 show the symptoms of hemolytic uremic syndrome (HUS). As a result of this discovery, the AFSCA has launched an investigation in order to detect the cause of this contamination. "On the basis of the presumed date of the purchase, consumption and the emergence of the disease, the beef thought to be involved has been recalled," explains the AFSCA in a press release.



- [Home Page](#)
- [My User Page](#)
- [My Noteboard](#)
- [Who's on-line?](#)
- [Send a message](#)
- [Send a message to Support](#)
- Watched Items**
- My Notes**
- My Keywords**
- My Messages**
- My Memos/Notices**
- [Personal Documents](#)



[HPZone](#)
[My HPZone](#)
[Control](#)
[Reference](#)
[Logged in at Zuid Limburg](#)

[New](#)
[Query](#)
[Lookup](#)
[Documents](#)
[Calendar](#)
[History](#)
[Tags](#)
[Noteboard](#)
[Help](#)

[My HPZone](#)
[Focal Item](#)
[Focal Set](#)
[Go](#)
[Log](#)
[No Target Item](#)

[Home Page](#)
[My User Page](#)
[My Noteboard](#)
[Who's on-line?](#)
[Send a message](#)
[Send a message to Support](#)

Outbreak/Incident
[Bookmark](#)
[Delete](#)
[Post](#)
[Watch](#)
[Print](#)
[Target](#)

346. Zuid Limburg: Coxiella burnetii

Initial Description

Toename van meldingen Q-koorts in Zuid Limburg

Assessment

Type	Outbreak/Incident
Scenario	Q Fever
Infectious Agent	Coxiella burnetii
Confidence	Laboratory Confirmed

Current Risk Assessment

Severity	Very Low
Confidence	Very High
Spread	Moderate
Intervention	Easy
Context	Calm
Risk Level	Level 2
Last assessed	03/06/2009, 1:59 PM

Outbreak Chart

01/02/2009	1
02/02/2009	1
03/02/2009	0
04/02/2009	0
05/02/2009	0

Events (5)

Related Documents (24)

Images (None)

Reports (3)

Associated Cases (188)

Common Exposure Contacts (None)

Other Contacts (None)

Contexts (2)

Actions (None)

Closed Actions (2)

Scheduled Actions (None)

Related Enquiries (1)

Change History (5)

- Rapid transnational detection and response
- Improved international collaboration
- Integration of surveillance and response systems, **especially in cross-border areas**
- Complicated by diverse political systems, medical infrastructures, economies, cultures, and legal aspects



International Infection Control



EMRIC +

Euregion Maas Rhine Intervention during Crises

Infectious diseases control

Improved and structured cross-border cooperation network resulting in a more adequate **euregional infectious disease surveillance and control**, as well as a better **disaster preparedness and response**



Project aim

EMR infectious diseases control

- Network of professionals infectious diseases control in the euregion
- Contact details
- National lists of notifiable diseases (D, B, NL)
- Exchange information and best practice
- Meetings
- Workshops
- Website: www.emrid.eu

How to start

Log On Register

EMRIC+
Infectious Disease Control

inFact
software

Home

A crossborder collaborative framework for infectious diseases preparedness, surveillance, response and communication

Site Under Construction

International outbreaks cannot be predicted and are occurring much faster than before. They require rapid transnational detection and response. **EMRIC+** facilitates international cooperation and collaboration in infectious disease control in the Euregio Maas Rhine through aligning euregional disease protocols commensurate with national guidelines, agreeing a minimal data set for exchange, and defining trigger events which are risk assessed accounting for transborder spread and euregional impact. It is realised through a secure realtime crossborder dashboard.

EUREGIO

Hasselt Maastricht Aken
Luik Eupen

EMRIC Web links
About Us Contact

inFact UK Ltd © 2012. All rights reserved Terms and Conditions Privacy Policy Contact us

Home Documenten en publicaties Onderwerpen RIVM

Infectieziekte-informatie voor professionals

Het RIVM speelt een belangrijke rol in de preventie en bestrijding van infectieziekten. Veel professionals in de infectieziektebestrijding maken gebruik van informatie van het RIVM. Op deze webpagina staat een overzicht van de informatie die specifiek voor professionals relevant is.

In dit onderwerp

- Diagnostiek
- Besloten domeinen
- Onderzoek
- Test je kennis



Meldingen Infectieziekten

- Virologische weekstaten
- Wet publieke gezondheid
- Meldingsplicht infectieziekten
- Surveillance van infectieziekten

Direct naar

- LCI-Richtlijnen
- LCI-Draaiboeken
- Infectieziekten Bulletin
- Informatiestandaarden Infectieziekten (ISI)
- Verpleegkundige stappenplannen (VSI)
- Diagnostisch vademecum en tarievenlijst
- Wet publieke gezondheid

Volg ons: [f](#) [t](#) [in](#) [v](#)

In de media

Laatste nieuws

- Organisaties gaan samenwerken om effecten van vaccinaties sneller in kaart te brengen
- Griep epidemie 2012/2013 langsturende in afgelopen 25 jaar
- Brochures over hepatitis op website RIVM gepubliceerd
- Europees aandacht voor antibiotica
- Jonge onderzoekers in beeld
- Meer nieuwsberichten



Gerelateerde onderwerpen

- Hepatitis B-risicogroepen
- Intensieve veehouderij
- ISIS-Antibioticaresistentie
- Klinische vaccinstudies
- Landelijk Centrum Hygiene en Veiligheid (LCHV)
- PREZIES
- Regionale ondersteuning infectieziektebestrijding

NL | FR | EN

Over ons | Nieuws | Formulieren | Applicaties-ICT | Publicaties

ZG Vlaams Agentschap Zorg & Gezondheid

Zorgaanbod Ziektes Gezond leven en milieu Vlaamse zorgverzekering Cijfers Beleid

Je bent hier: Home > Ziektes > Infectieziekten > Meldingsplichtige infectieziekten

- Ziektes**
- Ziekte lijst A-Z
 - Borstkankeropsporing
 - Zelfdoding
 - Aangeboren aandoeningen
 - Vaccinaties
 - Infectieziekten
 - Meldingsplichtige infectieziekten
 - Richtlijnen Infectieziektebestrijding Vlaanderen
 - Draaiboek Infectieziekten CLB
 - Infectieziektebulletin

Meldingsplichtige infectieziekten

Op deze pagina:

- Welke infectieziekten moet u melden?
- Hoe doet u melding?
- Regelgeving

Welke infectieziekten moet u melden?

De volgende infectieziekten moeten gemeld worden aan de arts infectieziektebestrijding van de afdeling Toezicht Volksgezondheid:

- Antrax
- Bof (niet meer meldingsplichtig vanaf 1 november 2013)
- Botulisme
- Brucellose
- Salmonella typhi of salmonella paratyphi-infectie
- Cholera

Zie ook

- In Beleid**
 - Regelgeving preventieve gezondheidszorg
- In Formulieren**
 - Meldformulier infectieziekten (DOC)
- In Publicaties**
 - Brochure meldingsplichtige infectieziekten (PDF)
- In Contactpagina**
 - Contactgegevens infectieziektebestrijding en vaccinatie
- In Cijfers**
 - Meldingen infectieziekten 2009-2013
- In Ziektes**
 - Ziekte lijst A-Z

http://www.rki.de/DE/Home/homepage_node.html

GGD ZL - Intranet

RKI - Startseite

ROBERT KOCH INSTITUT

Kontakt | Inhalt | Hilfe | Impressum | RSS | English | Schriftgröße A+ A-

Suchbegriff eingeben

Institut Gesundheitsmonitoring Infektionsschutz Forschung Kommissionen Service

Wesentliche Elemente des Infektionsschutzes

Nationale Referenzzentren (NRZ) und Konsiliarlaboren (KL) stellen wesentliche Elemente des Infektionsschutzes dar und ergänzen durch die emergenspezifische Fachkompetenz die Infektionsepidemiologische Surveillance, die von besonderer Public-Health-Relevanz ist. Gegenwärtig sind in Deutschland insgesamt 19 NRZ etabliert, die sich vorrangig mit der Entwicklung bzw. Verbesserung diagnostischer Verfahren der jeweiligen ihnen zugeordneten Erreger, deren Spezialdiagnostik und mit Resistenz- und Virulenz-Aspekten beschäftigen. Außerdem beraten die NRZ z.B. den Öffentlichen Gesundheitsdienst. Die Berufung der NRZ erfolgt jeweils für drei Jahre. Eine Evaluation zum Ende der Berichtsperiode entscheidet über die Weiterführung der einzelnen NRZ. Im Epidemiologischen Bulletin 47/2013 wird über das Ergebnis der jüngsten Evaluation berichtet. Konsiliarlaboren ergänzen das bestehende Netz der NRZ und der Einrichtungen des öffentlichen Gesundheitsdienstes sowie der einschlägigen Universitätsinstitute.

Stand: 26.11.2013

Weitere Informationen

- Epidemiologisches Bulletin 47/2013 (PDF, 88KB, Datei ist nicht barrierefrei)
- Informationen zu Nationalen Referenzzentren und Konsiliarlaboratorien
- Weitere Speziallaboren im RKI für spezifische Agenzien und Diagnoseverfahren

Themen

Zahl des Monats

11% der 18- bis 64-Jährigen in Deutschland erleben chronischen Stress. Frauen geben mit 13,9% häufiger eine überdurchschnittliche Stressbelastung an als Männer mit 8,2%.

Aktuelle Studien mit telefonischen Befragungen

Das Robert Koch-Institut erhebt Daten zur gesundheitlichen Lage der in Deutschland lebenden Bevölkerung. Im Rahmen dieser Studien finden unter anderem telefonische Befragungen statt.

Impfen

Impfungen gehören zu den wichtigsten und wirksamsten präventiven Maßnahmen.

Ergebnisse der DEGS-Studie

Im Bundesgesundheitsblatt (Ausgabe Mai/Juni 2013) sind in 24 Beiträgen

Infektionskrankheiten A-Z

Gesundheit A-Z

Aktuelles

Aktuelle Twitter-Meldungen des RKI abrufen

25.11.2013

Impfempfehlung gegen Polio beachten (Pressemitteilung des RKI)

25.11.2013

Welt-AIDS-Tag: Informationen zu HIV/AIDS in Deutschland

25.11.2013

Hygienemaßnahmen bei Infektionen oder Besiedlung mit multiresistenten gramnegativen bakteriiellen Erregern

15.11.2013

National Infection Control

What, when and how to report?

How and when to cooperate?

Structure?

Agreements?

Legal aspects?



Cross-border Infection Control



1. Euregional website
2. Euregional protocol with agreed Actions
3. Agreed Minimal Data Set (MDS) for Cases, Outbreaks and Exposure
4. Cross-border Risk Alert Levels (CRAL)
5. Cross-border Notification Template
6. Cross-border Dashboard

Cross-border Infection Control Instruments

Euregional protocol

When do I actually notify my cross-border colleague?

Euregional Protocol

Workflow for Case, Outbreak and Exposure

If any option is answered with yes, please notify the involved cross-border colleague

Severe disease	Cross-border connection					Cross-border Response		Likely spread across the border
	Contacts	Context	Residency	Media /Public Interest	History	Cross-border cooperation required	Special awareness required	
Yes/No	Yes/No	Yes/No	Yes/No	Yes/No	Yes/No	Yes/No	Yes/No	Yes/No

Euregional protocol

Cross-border Risk Alert Levels

How can my (busy) cross-border immediately realize the impact of my notification?

Can we develop a common method to assess the cross-border risk?

Cross-border Risk Alert Levels

- Delphi method on risk key words to formulate **Cross-border** Risk Alert Levels (CRAL)
- Notification:
 - impact on local region vs euregion
 - cross-border connection
 - managed locally vs cross-border response
(feedback, cross-border cooperation, outbreak management team, upscale)
- Agree on amount and definition of the Cross-border Risk Alert Levels

Cross-border Risk Alert Levels

Level	Definition
0	A case(s) or outbreak notification limited to the local region and would normally be managed by the local Unit with no cross-border connection, and therefore without the need to alert cross-border partners.
1	A case(s), outbreak notification or exposure with impact to the local region and possible cross-border cases and will be managed by the local Unit. This may require a limited response by, and possibly feedback from the cross-border partners.
2	A case(s), outbreak notification or exposure with possible or confirmed cross-border cases affecting a euregion cross-border population and will require the collaborative response with the possible initiation of a cross-border outbreak investigation team.
3	A large cross-border epidemic with severe impact affecting the euregional population. This would require a Outbreak management team including cross-border (and possibly national) government authorities (Upscale), and coordinating response, containment and communication.
4	A national/international outbreak, which would be directed by national and international government authorities.

Minimal Data Set

Which data are of the essence when
informing cross-border colleagues

about a **case, outbreak** or **exposure**

without violating data protection laws?

Minimal Data Set

Unique ID	Sex	Age	Date of Onset	Confirmed by/ Probable	Hospital/ Died

Context Type	City/Town	Suspected source

Case
Minimal Data Set

Unique ID	Estimated onset	Nb. Confirmed/ probable Cases	People at risk	Context

Suspected source including Location	Geographical cases' distribution	Age distribution	Sex distribution	Nb. Hospital / Died

Outbreak
Minimal Data Set

Unique ID	Date Onset Source	Suspected Cases	Location +Geographical distribution	Context Type

Exposure
Minimal Data Set

Cross-border Notification Template

How to report all information in a compact and structured way to my cross-border colleague?

Cross-border Notification Template

Cross-border Risk Alert Report

Risk Alert Level

1

Risk Alert Type

Exposure

**Echinococcus multilocularis
(Vossenlintworm/Kleiner Fuchsbandwurm)**

**South-Limburg declared endemic area:
sharp increase of prevalence in foxes**

Unique Report Identification

ZL-13-E1

Name of Notifier

Henriëtte ter Waarbeek

Telephone number and Email

+31 45 8506276

henriette.terwaarbeek@ggdzl.nl

Notifying Unit

GGD Zuid Limburg

Date

05-07-2013

Cross-border connection				Cross-border Response		Likely spread across the border
Contacts	Context	Residency	Media/ Public Interest	Cross-border cooperation required	Special awareness required	
No	No	No	Yes	No	Yes	Yes

Summary: Dutch animal and human health authorities report sharp increase (from 9% in 2005/2006 to 51% in 2013) of *Echinococcus multilocularis* in foxes in Maastricht area, South Limburg: *Echinococcus multilocularis* thus has become endemic in South Limburg, on a level that may be comparable to endemic regions in Germany or Switzerland. Possible threat for Belgian or German tourists to the region, or cross-border migration of foxes.

Letter and leaflets about risk (low), disease and precautions has been sent out to local GP's and veterinarians; the local population and tourists will be informed via media and leaflets.

More information for public and professionals: www.rivm.nl/vossenlintworm

Required key actions: Teleconference could be useful to discuss possible necessary precautions on German and Belgium side. Suggestions: exchange of informative flyers, consider information for the public on German/Belgium websites (Website public health service? Tourist information website?)

Accompanying Minimal Data Set

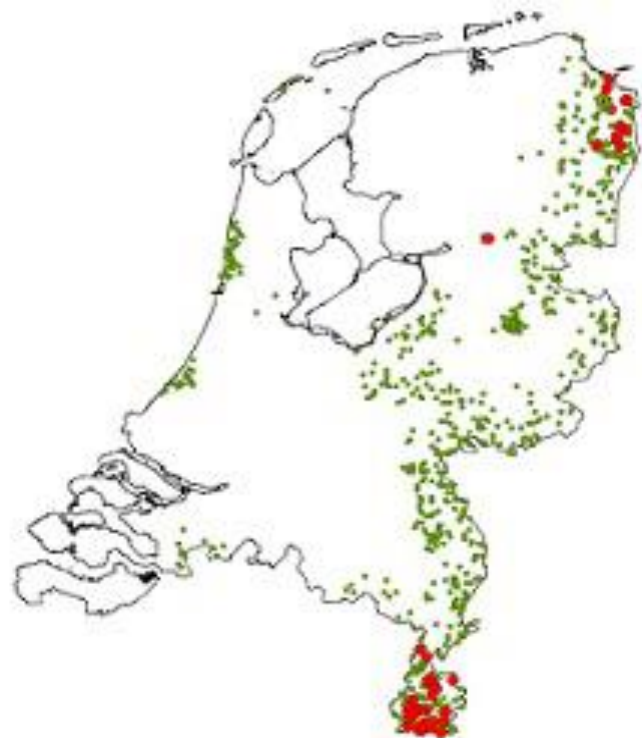
Exposure

<i>Unique ID</i>	<i>Date Onset Source</i>	<i>Suspected Cases</i>	<i>Location +Geographical distribution</i>	<i>Context Type</i>
RIVM 2337	2013	0	South Limburg (east of Maastricht)	Outdoors (forest/hills)

Locations where foxes were examined, 1998-2012.

Red dots: Foxes with *E. multilocularis*.

Green dots: Foxes without *E. multilocularis*.



Cross-border Dashboard

Is it possible to display what, when, where and how cases, contacts and outbreaks happen in the Euregio Maas Rhine?

Despite different electronic registration and management systems in place?

Cross-border Dashboard

Dashboard

 Crossborder 

- Visualization Cases, Contacts, Situations and Contexts (in realtime) in *Tables* and on *Maps* (GIS)
- Linking with other systems (no double data entry)
- Basic Report Function
- Basic Analysis Function
 - Select (Cases/Outbreaks, Location, Disease, Context, Time period)

Euregional Dashboard



HPZoneNL



ISGA – HPZoneD



Dashboard Concept



- Linking HPZone to Cross-border Dashboard:
 - Zuid Limburg
 - Limburg Noord
- Linking other software notification systems to Dashboard:
 - ISGA in Aachen (*HPZone)
 - ISGA in Euskirchen
 - (*Survnet in Heinsberg*)

HPZone Dashboard

[Select View](#)[Select View](#)[Cases by entry](#)[Select Location](#)[All](#)[Select Period](#)[Current Year](#)[Select Filter](#)[None selected](#)[Select Context](#)[None selected](#)[Dashboard Home](#)

Object Reports

Situations

[by Date of Declaration](#)[by Date of Entry](#)

Cases

[by Date of Onset](#)[by Date of Entry](#)

Summary Reports

Context Activity Reports

[Foreign Country](#)[Foreign Location](#)[Pre-school Nursery](#)[School](#)[College/University](#)[Hospital](#)[Care Home](#)[Prison/Detention Centre](#)[Restaurant/Food Outlet](#)[Workplace](#)[Visitor Attraction](#)[Congregation](#)[Environmental Exposure](#)

Case Activity Reports

[Analyse by Diagnosis and Unit](#)[Analyse by Diagnosis and Municipality](#)[Analyse by Infection and Unit](#)[Analyse by Infection and Municipality](#)[Analyse by Agent and Unit](#)[Analyse by Agent and Municipality](#)[Analyse by Notifiable Disease and Unit](#)[Analyse by Vaccine Preventable Diseases and Unit](#)[Analyse by Gastro-enteric Diseases and Unit](#)

Current Report Selection



Type: Cases by date of entry

Confidence:

[Select options](#)

Status:

[Select options](#)

Location: All



Period: Current Year



Filter: None selected



Contextual Setting: None selected

[Run this Report](#)

HPZone Dashboard**Select Location**

- ☒ Unit
 - ☐ Euskirchen
 - ☐ Gesundheitsamt Stadtregion Aachen
 - ☐ Noord Limburg
 - ☐ Zuid Limburg

- ☐ Municipalities
- ☐ PCTs
- ☐ Municipalities
- ☐ Postal Geography

**Select View**
Cases by entry**Select Location**
All**Select Period**
Current Year**Select Filter**
None selected**Select Context**
None selected**Current Report Selection****Type: Cases by date of entry**

Confidence:

Select options

Status:

Select options

**Location: All****Period: Current Year****Filter: None selected****Contextual Setting: None selected****Run this Report**

HPZone Dashboard

Select Filter

Select View
Cases by entrySelect Location
SelectionSelect Period
Current YearSelect Filter
SelectionSelect Context
None selected**Current Report Selection**

Type: Cases by date of entry

Confidence:

2 selected

Status:

Select options



Location: Units = Euskirchen or Gesundheitsamt Stadteregion Aachen or Noord Limburg or Zuid Limburg



Period: Current Year



Filter: Infection = Hepatitis A or Hepatitis B



Contextual Setting: None selected



Run this Report

- ☐ Dermatophytosis
- ☐ Diphtheria
- ☐ Diphyllbothrium Infection
- ☐ Dracunculus Infection
- ☐ E.coli Infection
- ☐ E.coli Infection, ESBL
- ☐ E.coli Infection, VTEC
- ☐ Ebola Haemorrhagic Fever
- ☐ Echinococcosis
- ☐ Ehrlichiosis
- ☐ Enterobacter Infection
- ☐ Enterobiasis
- ☐ Enterococcal Infection
- ☐ Enterovirus Infection
- ☐ Erysipelothrix Infection
- ☐ Exophiala Infection
- ☐ Fasciola Infection
- ☐ Fifth Disease (Erythema Infectiosum)
- ☐ Filaria Infection
- ☐ Fusarium Infection
- ☐ Giardiasis
- ☐ Gnathostoma Infection
- ☐ Gonococcal Infection
- ☐ Haemophilus Influenzae (non-type B) Infection
- ☐ Hantavirus Infection
- ☐ Hartmannella Infection
- ☒ Hepatitis A
- ☒ Hepatitis B
- ☐ Hepatitis C
- ☐ Hepatitis E
- ☐ Herpes simplex Infection
- ☐ Hib Infection
- ☐ Histoplasma Infection
- ☐ HIV Infection
- ☐ Hookworm Infection
- ☐ HPV Infection
- ☐ HTLV Infection
- ☐ Hymenolepis Infection

HPZone Dashboard

Select Filter



Select View

Cases by entry



Select Location

Selection



Select Period

Current Year



Select Filter

Selection



Select Context

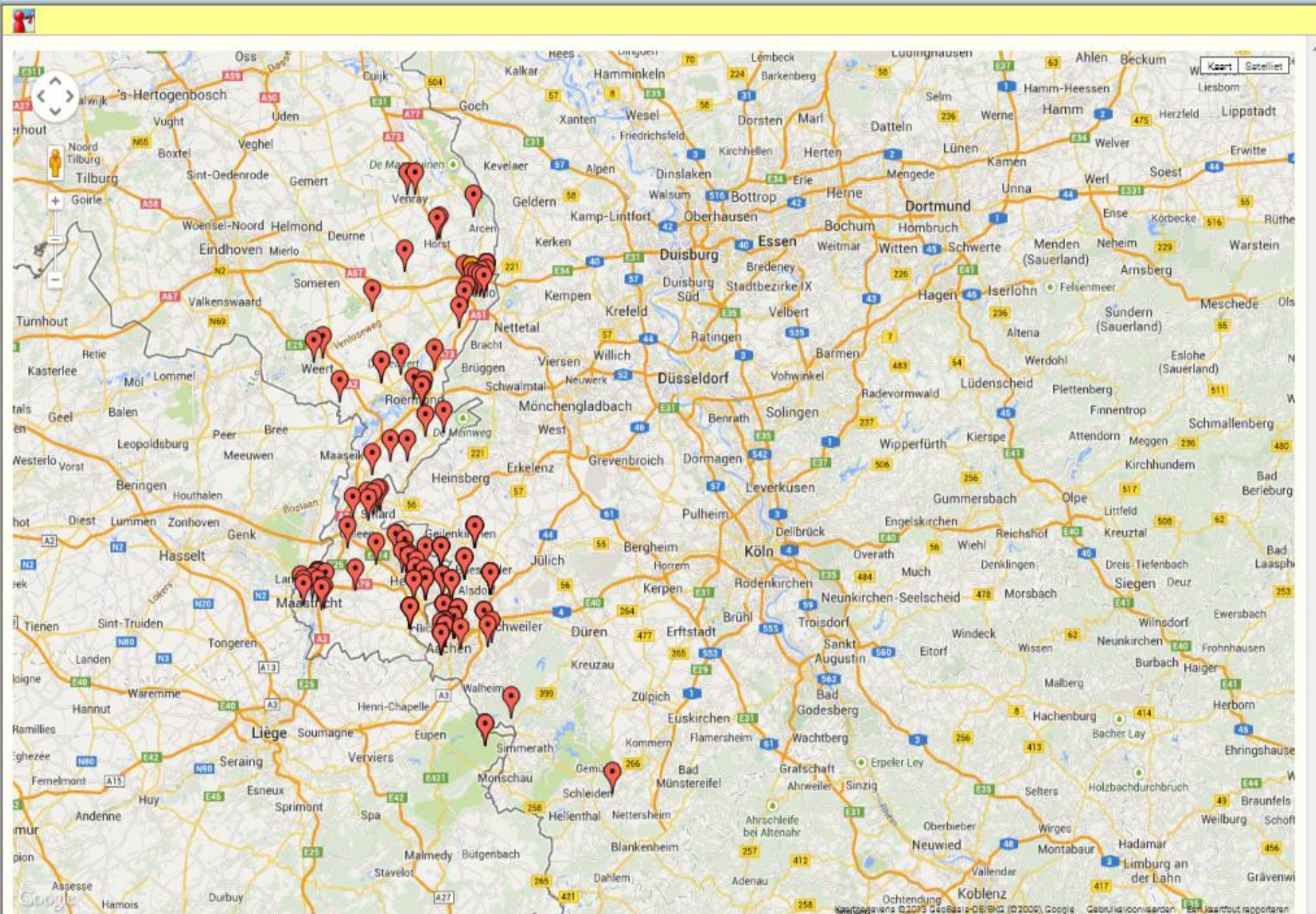
None selected

by Date of Entry (Units = Euskirchen or Gesundheitsamt Stadteregion Aachen or Noord Limburg or Zuid Limburg, Infection = Hepatitis A or Hepatitis B, Confidence = Confirmed or Probable) (1-100 of 158) Set Focus

View All Show Map Show Export Options Save Report Print

Page 1 of 2 Last Page

Identifier	Pri	Diagnosis	Confidence	Age (yrs)	Age (mths)	Gender	Date of Onset	Postcode	Unit
NLG/C13.59762		Chronic hepatitis B	Confirmed	15	0	Male		5916 RD	Noord Limburg
NLG/C13.59756		Chronic hepatitis B	Confirmed	16	0	Male		5916 RD	Noord Limburg
NLG/C13.60068		Chronic hepatitis B	Confirmed	38	0	Male		4126 RV	Noord Limburg
NLG/C13.59214		Chronic hepatitis B	Confirmed	13	0	Male		5916 RD	Noord Limburg
NLG/C13.59752		Chronic hepatitis B	Confirmed	9	0	Female		5916 RD	Noord Limburg
NLG/C13.53138		Chronic hepatitis B	Confirmed	35	0	Male		6095 PD	Noord Limburg
ZLG/C13.55808		Chronic hepatitis B	Confirmed	18	0	Female		6419 PL	Zuid Limburg
ACH/C2013.17492		Hepatitis B	Confirmed	49	8	Male		52249	Gesundheitsamt Stadteregion Aachen
ACH/C2013.15867		Hepatitis B	Confirmed	74	1	Female		52223	Gesundheitsamt Stadteregion Aachen
ACH/C2013.16702		Hepatitis B	Confirmed	30	4	Female		52074	Gesundheitsamt Stadteregion Aachen
ACH/C2013.17310		Acute hepatitis A	Confirmed	16	5	Male		52066	Gesundheitsamt Stadteregion Aachen
ACH/C2013.17311		Hepatitis B	Confirmed	16	5	Male		52066	Gesundheitsamt Stadteregion Aachen
ZLG/C13.54007		Chronic hepatitis B	Confirmed	49	0	Male		6137 TG	Zuid Limburg
ACH/C2013.15826		Hepatitis B	Confirmed	21	10	Female	01/01/2009	52499	Gesundheitsamt Stadteregion Aachen
NLG/C13.56355		Chronic hepatitis B	Confirmed	60	0	Male		5961 ST	Noord Limburg
ACH/C2013.18238		Hepatitis B	Confirmed	18	3	Female		52080	Gesundheitsamt Stadteregion Aachen
ACH/C2013.17321		Hepatitis B	Confirmed	21	7	Female	26/04/2013	52249	Gesundheitsamt Stadteregion Aachen
ACH/C2013.16288		Hepatitis B	Confirmed	41	11	Male	11/12/2012	52076	Gesundheitsamt Stadteregion Aachen
ZLG/C13.60098		Hepatitis B	Confirmed	47	0	Male		6227 BS	Zuid Limburg



HPZone Dashboard

Select Period

Periods

Calendar

- ☐ 2007
- ☐ 2008
- ☐ 2009
- ☐ 2010
- ☐ 2011
- ☐ 2012
- ☐ 2013
 - ☐ January 2013
 - ☐ February 2013
 - ☐ March 2013
 - ☐ April 2013
 - ☐ May 2013
 - ☐ June 2013
 - ☐ July 2013
 - ☐ August 2013
 - ☐ September 2013
 - ☐ October 2013
 - ☐ November 2013
 - ☐ Week 44, 28/10 - 3/11
 - ☐ Week 45, 4/11 - 10/11
 - ☐ Week 46, 11/11 - 17/11
 - ☒ Week 47, 18/11 - 24/11
 - ☐ Week 48, 25/11 - 1/12
 - ☐ Monday, 25 November 2013
 - ☐ Tuesday, 26 November 2013
 - ☐ Wednesday, 27 November 2013
 - ☐ Thursday, 28 November 2013
 - ☐ Friday, 29 November 2013
 - ☐ Saturday, 30 November 2013
 - ☐ Sunday, 1 December 2013
 - ☐ December 2013

**Select View**
Cases by entry**Select Location**
All**Select Period**
18/11/13-24/11/13**Select Filter**
None selected**Select Context**
None selected

Current Report Selection

**Type: Cases by date of entry**

Confidence:

Select options

Status:

Select options

**Location: All****Period: 18/11/13-24/11/13****Filter: None selected****Contextual Setting: None selected****Run this Report**

HPZone Dashboard

Select View

Dashboard Home

Object Reports

Situations

by Date of Declaration

by Date of Entry

Cases

by Date of Onset

by Date of Entry

Summary Reports

Context Activity Reports

Foreign Country

Foreign Location

Pre-school Nursery

School

College/University

Hospital

Care Home

Prison/Detention Centre

Restaurant/Food Outlet

Workplace

Visitor Attraction

Congregation

Environmental Exposure

Case Activity Reports

Analyse by Diagnosis and Unit

Analyse by Diagnosis and Municipality

Analyse by Infection and Unit

Analyse by Infection and Municipality

Analyse by Agent and Unit

Analyse by Agent and Municipality

Analyse by Notifiable Disease and Unit

Analyse by Vaccine Preventable Diseases and Unit

Analyse by Gastro-enteric Diseases and Unit



Select View

Cases by entry



Select Location

Selection



Select Period

18/11/13-24/11/13



Select Filter

None selected



Select Context

None selected

by Date of Entry (Units = Euskirchen or Gesundheitsamt Stadteregion Aachen or Noord Limburg or Zuid Limburg, 18/11/13-24/11/13) (1-100 of 161)

Set Focus

View All Show Map Show Export Options Save Report Print

Page 1 of 2 Last Page

Identifier	Pri	Diagnosis	Confidence	Age (yrs)	Age (mths)	Gender	Date of Onset	Postcode	Unit
ZLG/C13.62924	●	Prik/Besmettingsaccident	Confirmed	50	0	Female	20/11/2013	6483 CZ	Zuid Limburg
ZLG/C13.62823		Prik/Besmettingsaccident	Confirmed	55	0	Female	18/11/2013		Zuid Limburg
ZLG/C13.62952	●	E.coli VTEC O157 infection	Confirmed	69	0	Female	17/11/2013	6191 KX	Zuid Limburg
ACH/C2013.18661		Varicella (chickenpox)	Confirmed	3	0	Male	12/11/2013	52064	Gesundheitsamt Stadteregion Aachen
EUS/C2013.18777		Noroviral gastroenteritis	Confirmed	1	10	Male	11/11/2013	53909	Euskirchen
EUS/C2013.18775		Legionnaires Disease	Confirmed	42	6	Male	09/11/2013	53919	Euskirchen
EUS/C2013.18759		Measles	Confirmed	1	8	Female	08/11/2013	53947	Euskirchen
EUS/C2013.18763		Noroviral gastroenteritis	Confirmed	62	3	Female	06/11/2013	53937	Euskirchen
EUS/C2013.18769		Campylobacteriosis	Confirmed	19	2	Female	05/11/2013	53909	Euskirchen
EUS/C2013.18771		Noroviral gastroenteritis	Confirmed	67	2	Female	04/11/2013	53937	Euskirchen
ACH/C2013.18672		Noroviral gastroenteritis	Confirmed	2	2	Female	02/11/2013	52134	Gesundheitsamt Stadteregion Aachen
EUS/C2013.18756		Noroviral gastroenteritis	Confirmed	20	3	Male	02/11/2013	53937	Euskirchen
EUS/C2013.18753		Campylobacteriosis	Confirmed	49	4	Male	02/11/2013	53945	Euskirchen
ACH/C2013.18650		Giardiasis	Confirmed	12	11	Female	01/11/2013	52222	Gesundheitsamt Stadteregion Aachen
ZLG/C13.62773	●	E.coli VTEC O157 infection	Confirmed	80	0	Female	01/11/2013	6191 GW	Zuid Limburg
ZLG/C13.62779		Whooping cough	Confirmed	66	0	Male	01/11/2013	6431 TG	Zuid Limburg
ACH/C2013.18670		Noroviral gastroenteritis	Confirmed	14	7	Male	01/11/2013	52072	Gesundheitsamt Stadteregion Aachen
ACH/C2013.18655		Rotaviral gastroenteritis	Confirmed	37	1	Female	31/10/2013	52477	Gesundheitsamt Stadteregion Aachen
EUS/C2013.18772		Unclassified	Confirmed	19	1	Male	31/10/2013	53894	Euskirchen
ACH/C2013.18654		Campylobacteriosis	Confirmed	54	6	Male	30/10/2013	52070	Gesundheitsamt Stadteregion Aachen
EUS/C2013.18752		Noroviral gastroenteritis	Confirmed	72	11	Female	30/10/2013	53902	Euskirchen
ACH/C2013.18673		Varicella (chickenpox)	Confirmed	7	7	Male	29/10/2013	52499	Gesundheitsamt Stadteregion Aachen
ACH/C2013.18689		Campylobacteriosis	Confirmed	52	11	Female	29/10/2013	52078	Gesundheitsamt Stadteregion Aachen
ZLG/C13.62956	●	Whooping cough	Confirmed	51	0	Male	29/10/2013	6161 BR	Zuid Limburg
ACH/C2013.18651		Legionnaires Disease	Confirmed	66	4	Male	29/10/2013	52078	Gesundheitsamt Stadteregion Aachen
ACH/C2013.18649		Campylobacteriosis	Confirmed	49	2	Female	28/10/2013	52146	Gesundheitsamt Stadteregion Aachen

HPZone Dashboard

Select View

Dashboard Home

Object Reports

Situations

by Date of Declaration

by Date of Entry

Cases

by Date of Onset

by Date of Entry

Summary Reports

Context Activity Reports

Foreign Country

Foreign Location

Pre-school Nursery

School

College/University

Hospital

Care Home

Prison/Detention Centre

Restaurant/Food Outlet

Workplace

Visitor Attraction

Congregation

Environmental Exposure

Case Activity Reports

Analyse by Diagnosis and Unit

Analyse by Diagnosis and Municipality

Analyse by Infection and Unit

Analyse by Infection and Municipality

Analyse by Agent and Unit

Analyse by Agent and Municipality

Analyse by Notifiable Disease and Unit

Analyse by Vaccine Preventable Diseases and Unit

Analyse by Gastro-enteric Diseases and Unit



Select View

Cases by entry



Select Location

Selection



Select Period

18/11/13-24/11/13



Select Filter

None selected



Select Context

None selected

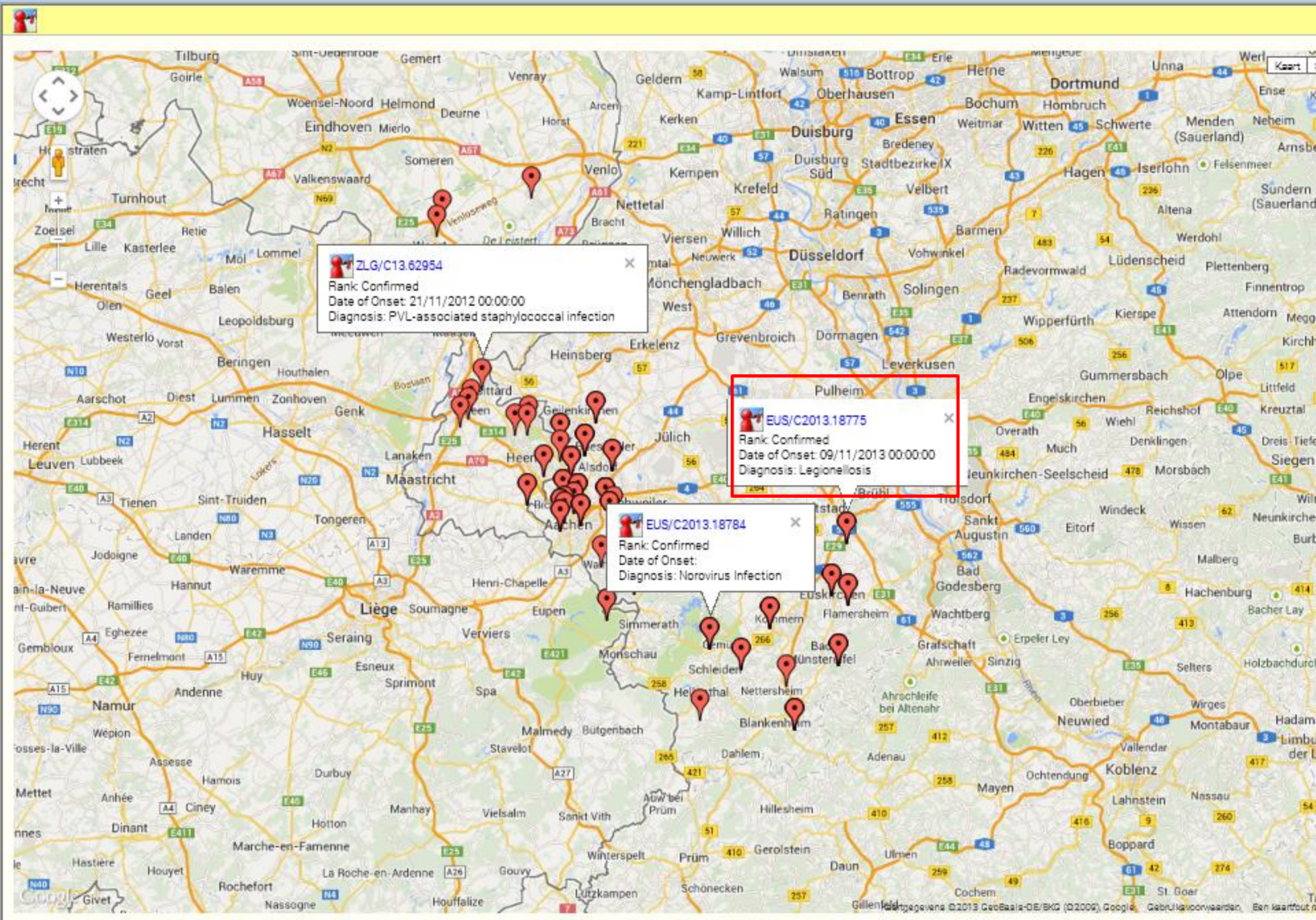
by Date of Entry (Units = Euskirchen or Gesundheitsamt Stadteregion Aachen or Noord Limburg or Zuid Limburg, 18/11/13-24/11/13) (1-100 of 161)

Set Focus

View All Show Map Show Export Options Save Report Print

Page 1 of 2 Last Page

Identifier	Pri	Diagnosis	Confidence	Age (yrs)	Age (mths)	Gender	Date of Onset	Postcode	Unit
ACH/C2013.18713		Yersiniosis	Confirmed	23	8	Female		52080	Gesundheitsamt Stadteregion Aachen
NLG/C13.62945		Whooping cough	Confirmed	71	0	Male	23/10/2013	6031 VT	Noord Limburg
EUS/C2013.18788		Whooping cough	Confirmed	59	10	Male		53881	Euskirchen
ZLG/C13.62855		Whooping cough	Confirmed	53	0	Male		6414 EH	Zuid Limburg
NLG/C13.62943		Whooping cough	Confirmed	35	0	Male	03/10/2013	6004 RA	Noord Limburg
ACH/C2013.18874		Whooping cough	Confirmed	63	11	Female		52074	Gesundheitsamt Stadteregion Aachen
ACH/C2013.18862		Whooping cough	Confirmed	34	9	Male		52499	Gesundheitsamt Stadteregion Aachen
ACH/C2013.18848		Whooping cough	Confirmed	52	5	Female		52062	Gesundheitsamt Stadteregion Aachen
ZLG/C13.62779		Whooping cough	Confirmed	66	0	Male	01/11/2013	6431 TG	Zuid Limburg
ACH/C2013.18893		Whooping cough	Confirmed	0	0	Male		52222	Gesundheitsamt Stadteregion Aachen
ZLG/C13.62956		Whooping cough	Confirmed	51	0	Male	29/10/2013	6161 BR	Zuid Limburg
ACH/C2013.18708		Varicella (chickenpox)	Confirmed	4	10	Male		52080	Gesundheitsamt Stadteregion Aachen
ACH/C2013.18873		Varicella (chickenpox)	Confirmed	7	7	Male	29/10/2013	52499	Gesundheitsamt Stadteregion Aachen
EUS/C2013.18757		Varicella (chickenpox)	Confirmed	27	8	Female		53919	Euskirchen
EUS/C2013.18741		Varicella (chickenpox)	Confirmed	43	6	Male	18/10/2013	53879	Euskirchen
ACH/C2013.18721		Varicella (chickenpox)	Confirmed	4	10	Female		52080	Gesundheitsamt Stadteregion Aachen
ACH/C2013.18710		Varicella (chickenpox)	Confirmed	2	9	Female		52070	Gesundheitsamt Stadteregion Aachen
ACH/C2013.18709		Varicella (chickenpox)	Confirmed	7	7	Male		52070	Gesundheitsamt Stadteregion Aachen
ACH/C2013.18861		Varicella (chickenpox)	Confirmed	3	0	Male	12/11/2013	52064	Gesundheitsamt Stadteregion Aachen
ACH/C2013.18719		Unclassified	Confirmed	5	9	Female	22/10/2013	52222	Gesundheitsamt Stadteregion Aachen
ACH/C2013.18853		Unclassified	Confirmed	69	9	Male	15/10/2013	52156	Gesundheitsamt Stadteregion Aachen
ACH/C2013.18715		Unclassified	Confirmed	4	8	Female	02/02/2009	52223	Gesundheitsamt Stadteregion Aachen





Case

[Back](#)[Print](#)**18775: Legionnaires Disease. Confirmed**

Diagnostic History (None)

Assessment



Key Details

Identifier	EUS/C2013.18775
Notifiable as	Legionellose
Priority	
Status	Closed
Date of Onset	08/11/2013 (Observed Date)
Current Location	
Recent travel to another country	Türkei (13.10.2013 - 21.10.2013)
Principal Contextual Setting	
Hospitalised	

Reporting

Notification



Administration



Transmission

Risk Factors



Immunisation Status

Microbiology



Demographics



GP Details

[? Related Enquiries \(None\)](#)[Related Situations \(None\)](#)[Specific Contexts \(None\)](#)

HPZone Dashboard

Select Filter

Select View
Cases by entrySelect Location
SelectionSelect Period
Current YearSelect Filter
LegionellosisSelect Context
None selected**Current Report Selection**

Type: Cases by date of entry

Confidence:

Select options

Status:

Select options



Location: Units = Euskirchen or Gesundheitsamt Stadteregion Aachen or Noord Limburg or Zuid Limburg



Period: Current Year



Filter: Infection = Legionellosis



Contextual Setting: None selected



Run this Report

- ☐ Gnathostoma Infection
- ☐ Gonococcal Infection
- ☐ Haemophilus influenzae (non-type B) Infection
- ☐ Hantavirus Infection
- ☐ Hartmannella Infection
- ☐ Hepatitis A
- ☐ Hepatitis B
- ☐ Hepatitis C
- ☐ Hepatitis E
- ☐ Herpes simplex Infection
- ☐ Hib Infection
- ☐ Histoplasma Infection
- ☐ HIV Infection
- ☐ Hookworm Infection
- ☐ HPV Infection
- ☐ HTLV Infection
- ☐ Hymenolepis Infection
- ☐ IGAS (Invasive Group A Streptococcal) Infection
- ☐ Influenza A, Avian
- ☐ Influenza A, Emergent
- ☐ Influenza A, Seasonal
- ☐ Influenza A, Swine
- ☐ Influenza B
- ☐ Influenza C
- ☐ Influenza, unspecified
- ☐ Klebsiella Infection
- ☐ Lassa fever
- ☒ Legionellosis
- ☐ Leishmaniasis
- ☐ Leprosy
- ☐ Leptospirosis
- ☐ Listeriosis
- ☐ Lyme Disease
- ☐ Lymphocryptovirus
- ☐ Malaria
- ☐ Marburg Haemorrhagic Fever
- ☐ Measles

HPZone Dashboard

Select Filter



Select View

Cases by entry



Select Location

Selection



Select Period

Current Year



Select Filter

Legionellosis



Select Context

None selected

Select Filter

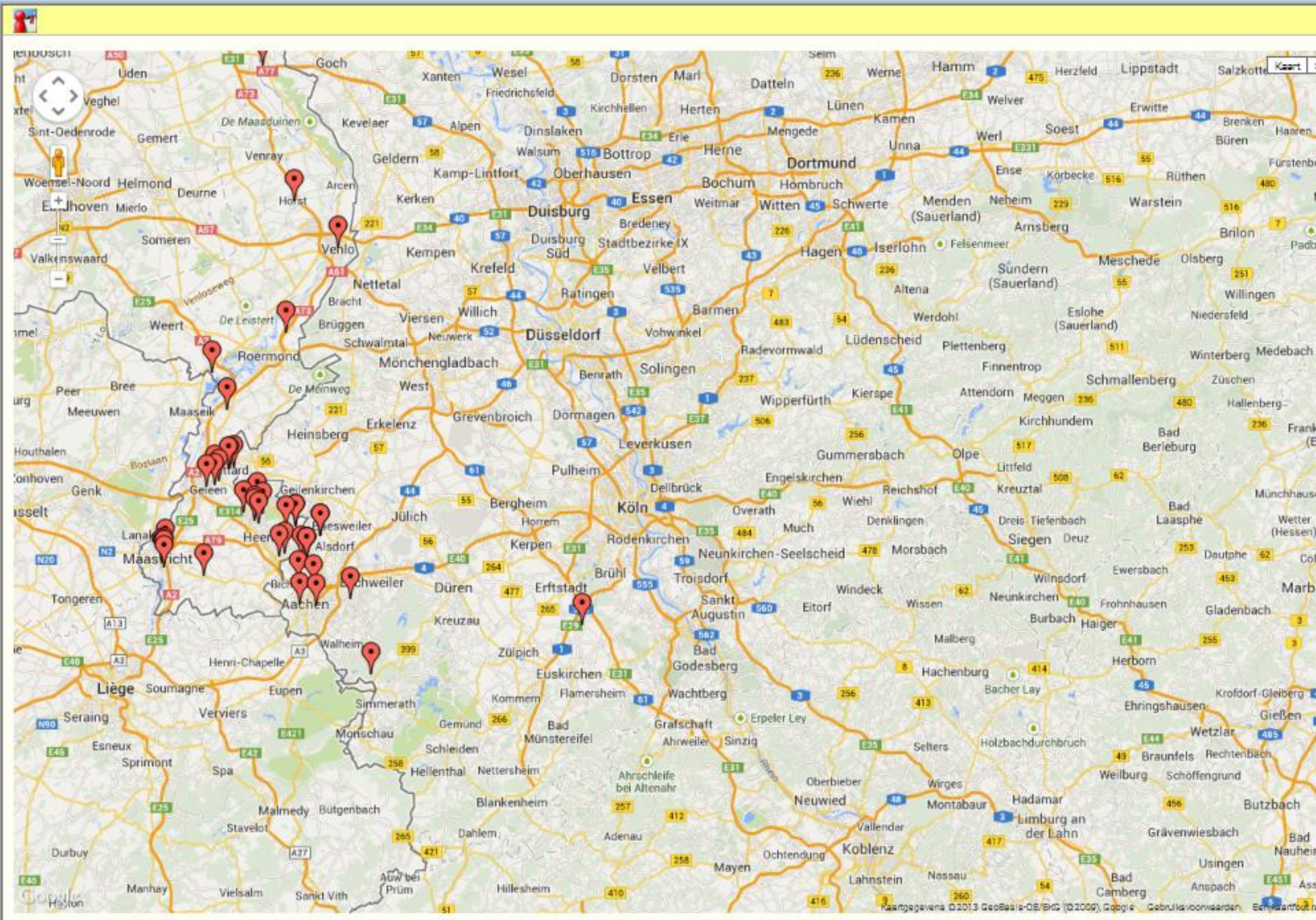
- ☐ Gnathostoma Infection
- ☐ Gonococcal Infection
- ☐ Haemophilus influenzae (non-type B) Infection
- ☐ Hantavirus Infection
- ☐ Hartmannella Infection
- ☐ Hepatitis A
- ☐ Hepatitis B
- ☐ Hepatitis C
- ☐ Hepatitis E
- ☐ Herpes simplex Infection
- ☐ Hib Infection
- ☐ Histoplasma Infection
- ☐ HIV Infection
- ☐ Hookworm Infection
- ☐ HPV Infection
- ☐ HTLV Infection
- ☐ Hymenolepis Infection
- ☐ IGAS (Invasive Group A Streptococcal) Infection
- ☐ Influenza A, Avian
- ☐ Influenza A, Emergent
- ☐ Influenza A, Seasonal
- ☐ Influenza A, Swine
- ☐ Influenza B
- ☐ Influenza C
- ☐ Influenza, unspecified
- ☐ Klebsiella Infection
- ☐ Lassa fever
- ☒ Legionellosis
- ☐ Leishmaniasis
- ☐ Leprosy
- ☐ Leptospirosis
- ☐ Listeriosis
- ☐ Lyme Disease
- ☐ Lymphocryptovirus
- ☐ Malaria
- ☐ Marburg Haemorrhagic Fever
- ☐ Measles

by Date of Entry (Units = Euskirchen or Gesundheitsamt Stadteregion Aachen or Noord Limburg or Zuid Limburg, Infection = Legionellosis, Confidence = Confirmed) (46) [Set Focus](#)

Show Map [Show Export Options](#) [Save Report](#) [Print](#)

Identifier	Pri	Diagnosis	Confidence	Age (yrs)	Age (mths)	Gender	Date of Onset	Postcode	Unit
EUS/C2013.18775		Legionnaires Disease	Confirmed	42	6	Male	09/11/2013	53919	Euskirchen
ACH/C2013.15775		Legionnaires Disease	Confirmed	85	8	Male	29/01/2013	52146	Gesundheitsamt Stadteregion Aachen
ACH/C2013.18124		Legionnaires Disease	Confirmed	24	9	Male	09/09/2013	52066	Gesundheitsamt Stadteregion Aachen
ACH/C2013.17463		Legionnaires Disease	Confirmed	70	0	Male		52080	Gesundheitsamt Stadteregion Aachen
ACH/C2013.15772		Legionnaires Disease	Confirmed	61	7	Male	14/09/2012	52146	Gesundheitsamt Stadteregion Aachen
ACH/C2013.18591		Legionnaires Disease	Confirmed	55	8	Male	12/08/2013	52070	Gesundheitsamt Stadteregion Aachen
ACH/C2013.17458		Legionnaires Disease	Confirmed	72	4	Male		52134	Gesundheitsamt Stadteregion Aachen
ACH/C2013.18071		Legionnaires Disease	Confirmed	39	8	Male		52477	Gesundheitsamt Stadteregion Aachen
ACH/C2013.18579		Legionnaires Disease	Confirmed	77	6	Female	05/02/2013	52134	Gesundheitsamt Stadteregion Aachen
ACH/C2013.18122		Legionnaires Disease	Confirmed	57	9	Male		52224	Gesundheitsamt Stadteregion Aachen
ACH/C2013.18550		Legionnaires Disease	Confirmed	66	4	Male		52477	Gesundheitsamt Stadteregion Aachen
ACH/C2013.17304		Legionnaires Disease	Confirmed	73	4	Female	25/04/2013	52146	Gesundheitsamt Stadteregion Aachen
ACH/C2013.15780		Legionnaires Disease	Confirmed	63	9	Male	02/02/2013	52152	Gesundheitsamt Stadteregion Aachen
ACH/C2013.18851		Legionnaires Disease	Confirmed	66	4	Male	29/10/2013	52078	Gesundheitsamt Stadteregion Aachen
ACH/C2013.17424		Legionnaires Disease	Confirmed	76	0	Female	04/03/2013	52072	Gesundheitsamt Stadteregion Aachen
NLG/C13.61509		Legionnaires Disease	Confirmed	40	0	Male	30/09/2013	6017 BV	Noord Limburg
NLG/C13.60815		Legionnaires Disease	Confirmed	87	0	Male	15/09/2013	5911 AD	Noord Limburg
NLG/C13.58892		Pontiac Fever	Confirmed	38	0	Male	23/07/2013	6101 LN	Noord Limburg
NLG/C13.61284		Legionnaires Disease	Confirmed	59	0	Male	29/09/2013	6071 HD	Noord Limburg
NLG/C13.60182		Legionnaires	Confirmed	57	0	Female	25/08/2013	6508 BK	Noord Limburg

HPZone Dashboard									
Select Filter									
<div> <div> Select View Cases by entry </div> <div> Select Location Selection </div> <div> Select Period Current Year </div> <div> Select Filter Legionellosis </div> <div> Select Context None selected </div> </div>									
<input type="checkbox"/> Grathostoma Infection <input type="checkbox"/> Gonococcal Infection <input type="checkbox"/> Haemophilus influenzae (non-type B) Infection <input type="checkbox"/> Hantavirus Infection <input type="checkbox"/> Hartmannella Infection <input type="checkbox"/> Hepatitis A <input type="checkbox"/> Hepatitis B <input type="checkbox"/> Hepatitis C <input type="checkbox"/> Hepatitis E <input type="checkbox"/> Herpes simplex Infection <input type="checkbox"/> Hib Infection <input type="checkbox"/> Histoplasma Infection <input type="checkbox"/> HIV Infection <input type="checkbox"/> Hookworm Infection <input type="checkbox"/> HPV Infection <input type="checkbox"/> HTLV Infection <input type="checkbox"/> Hymenolepis Infection <input type="checkbox"/> IGAS (Invasive Group A Streptococcal) Infection <input type="checkbox"/> Influenza A, Avian <input type="checkbox"/> Influenza A, Emergent <input type="checkbox"/> Influenza A, Seasonal <input type="checkbox"/> Influenza A, Swine <input type="checkbox"/> Influenza B <input type="checkbox"/> Influenza C <input type="checkbox"/> Influenza, unspecified <input type="checkbox"/> Klebsiella Infection <input type="checkbox"/> Lassa fever <input checked="" type="checkbox"/> Legionellosis <input type="checkbox"/> Leishmaniasis <input type="checkbox"/> Leprosy <input type="checkbox"/> Leptospirosis <input type="checkbox"/> Listeriosis <input type="checkbox"/> Lyme Disease <input type="checkbox"/> Lymphocryptovirus <input type="checkbox"/> Malaria <input type="checkbox"/> Marburg Haemorrhagic Fever <input type="checkbox"/> Measles	ZLG/C13.61128 ZLG/C13.59887 ZLG/C13.53999 ZLG/C13.61339 ZLG/C13.55445 ZLG/C13.60259 ZLG/C13.61167 ZLG/C13.54854 ZLG/C13.60008 ZLG/C13.62171 ZLG/C13.61528 ZLG/C13.53107 ZLG/C13.59459 ZLG/C13.60460 ZLG/C13.59785 ZLG/C13.61855 ZLG/C13.54006 ZLG/C13.61646 ZLG/C13.52817 ZLG/C13.59626 ZLG/C13.55851 ZLG/C13.62050	Legionnaires Disease Legionnaires Disease	Confirmed Confirmed	75 51 66 57 52 74 52 62 76 68 91 74 68 72 61 55 67 53 57 69 73 73	0 0	Female Male Female Male Male Male Female Male Female Male Female Male Female Female Male Male Male Male Male Female Male Male	25/09/2013 16/08/2013 12/02/2013 13/09/2013 27/03/2013 07/09/2013 26/09/2013 08/03/2013 30/08/2013 25/10/2013 11/01/2013 12/08/2013 06/09/2013 16/08/2013 01/10/2013 16/12/2012 10/10/2013 29/12/2012 17/08/2013 11/04/2013 16/10/2013	6413 HT 6431 BW 6137 CC 6221 TM 6137 TL 6444 DK 6137 XB 6222 XP 6466 ER 6224 LW 6133 VK 6224 EC 6413 AJ 6269 CX 6161 GZ 6462 CB 6413 LX 6221 CM 6414 TD 6166 GP	Zuid Limburg Zuid Limburg



HPZone Dashboard

Select View



Select View
Case Activity

Select Location
All

Select Period
Current Year

Select Filter
Selection

Select Context
None selected

Dashboard Home

Object Reports

Situations

by Date of Declaration

by Date of Entry

Cases

by Date of Onset

by Date of Entry

Summary Reports

Context Activity Reports

Foreign Country

Foreign Location

Pre-school Nursery

School

College/University

Hospital

Care Home

Prison/Detention Centre

Restaurant/Food Outlet

Workplace

Visitor Attraction

Congregation

Environmental Exposure

Case Activity Reports

Analyse by Diagnosis and Unit

Analyse by Diagnosis and Municipality

Analyse by Infection and Unit

Analyse by Infection and Municipality

Analyse by Agent and Unit

Analyse by Agent and Municipality

Analyse by Notifiable Disease and Unit

Analyse by Vaccine Preventable Diseases and Unit

Analyse by Gastro-enteric Diseases and Unit



Current Report Selection



Type: Cases by Gastro-enteric Diseases and Unit



Location: All



Period: Current Year



Run this Report

HPZone Dashboard

Select View

Select View
Case ActivitySelect Location
AllSelect Period
Current YearSelect Filter
None selectedSelect Context
None selected

Dashboard Home

Object Reports

Situations

by Date of Declaration

by Date of Entry

Cases

by Date of Onset

by Date of Entry

Summary Reports

Context Activity Reports

Foreign Country

Foreign Location

Pre-school Nursery

School

College/University

Hospital

Care Home

Prison/Detention Centre

Restaurant/Food Outlet

Workplace

Visitor Attraction

Congregation

Environmental Exposure

Case Activity Reports

Analyse by Diagnose and Unit

Analyse by Diagnose and Municipality

Analyse by Infection and Unit

Analyse by Infection and Municipality

Analyse by Agent and Unit

Analyse by Agent and Municipality

Analyse by Notifiable Disease and Unit

Analyse by Vaccine Preventable Diseases and Unit

Analyse by Gastro-enteric Diseases and Unit



Analyse by Gastro-enteric Diseases and Unit (24)

Show Export Options Save Report Print

Name	Cases: Gesundheitsamt Stadteregion Aachen	Cases: Noord Limburg	Cases: Euskirchen	Cases: Zuid Limburg	Cases: Total
Adenovirus Infection	(4)				(4)
Astrovirus Infection					
Bacillus cereus infection					
Botulism					
Calicivirus infection, unspecified					
Campylobacteriosis	(528)	(9)	(40)	(7)	(584)
Cholera					
Clostridium perfringens infection					
Clostridium perfringens intoxication					
Coronavirus					
Cryptosporidiosis	(3)	(1)			(4)
E.coli infection	(19)	(1)	(2)	(2)	(24)
E.coli infection, ESBL					
E.coli infection, VTEC	(2)	(2)		(5)	(9)
Giardiasis	(38)	(3)	(1)		(42)
Hepatitis A	(10)	(2)		(10)	(22)
Listeriosis	(9)	(2)	(1)	(2)	(14)
Norovirus Infection	(574)	(1)	(31)	(24)	(630)
Paratyphoid Fever		(1)		(2)	(3)
Rotavirus Infection	(319)	(4)	(16)	(7)	(343)
Salmonellosis		(1)			(1)
Shigellosis (Bacillary Dysentery)	(3)	(16)		(5)	(24)
Typhoid Fever					
Yersiniosis					

HPZone Dashboard

Select View

Select Location

Select Period

Select Filter

Select Context

Select View

Case Activity

Select Location

All

Select Period

Current Year

Select Filter

None selected

Select Context

None selected

Dashboard Home

Object Reports

Situations

Cases

Summary Reports

Context Activity Reports

Case Activity Reports

Cases: Rotavirus Infection (1)

Show Map Show Export Options Save Report Print

Identifier	Pri	Diagnosis	Confidence	Age (yrs)	Age (mths)	Gender	Date of Onset	Postcode	Unit
NLG/C13.56127		Rotaviral gastroenteritis	Confirmed	0	9	Male	20/04/2013	6041 DZ	Noord Limburg

HPZone Dashboard

Select View

Select View

Select Location

Select Period

Select Filter

Select Context

Dashboard Home

Object Reports

Situations

Cases

Summary Reports

Context Activity Reports

Case Activity Reports

Case

Print

56127: Rotaviral gastroenteritis. Confirmed

Diagnostic History (1)

Assessment

Key Details

Identifier	NLG/C13.56127
Priority	0
Status	Closed
Date closed	06/05/2013
Date of Onset	20/04/2013 (Fair Estimate)
Current Location	Verblijvend op huisadres
Recent travel to another country	
Principal Contextual Setting	Gezinssituatie
Hospitalised	Yes

Reporting

Notification

Administration

Transmission

Risk Factors

Immunisation Status

Microbiology

Demographics

GP Details

Related Enquiries (None)

Related Situations (None)

Specific Contexts (None)

HPZone Dashboard**Select View****Select View**
Case Activity**Select Location**
All**Select Period**
Current Year**Select Filter**
None selected**Select Context**
None selected[Dashboard Home](#)

Object Reports

Situations

- [by Date of Declaration](#)
- [by Date of Entry](#)

Cases

- [by Date of Onset](#)
- [by Date of Entry](#)

Summary Reports

Context Activity Reports

- [Foreign Country](#)
- [Foreign Location](#)
- [Pre-school Nursery](#)
- [School](#)
- [College/University](#)
- [Hospital](#)
- [Care Home](#)
- [Prison/Detention Centre](#)
- [Restaurant/Food Outlet](#)
- [Workplace](#)
- [Visitor Attraction](#)
- [Congregation](#)
- [Environmental Exposure](#)

Case Activity Reports

- [Analyse by Diagnosis and Unit](#)
- [Analyse by Diagnosis and Municipality](#)
- [Analyse by Infection and Unit](#)
- [Analyse by Infection and Municipality](#)
- [Analyse by Agent and Unit](#)
- [Analyse by Agent and Municipality](#)
- [Analyse by Notifiable Disease and Unit](#)
- [Analyse by Vaccine Preventable Diseases and Unit](#)
- [Analyse by Gastro-enteric Diseases and Unit](#)

Analyse by Vaccine Preventable Diseases and Unit (23)[Show Export Options](#) [Save Report](#) [Print](#)

Name	Cases: Gesundheitsamt Stadteregion Aachen	Cases: Noord Limburg	Cases: Euskirchen	Cases: Zuid Limburg	Cases: Total
Anthrax					
Cholera					
Diphtheria					
Hepatitis A	(10)	(2)		(10)	(22)
Hepatitis B	(64)	(50)	(1)	(39)	(154)
Hib infection		(1)			(1)
Influenza A, Avian				(1)	(1)
Influenza A, Seasonal	(34)	(1)			(35)
Influenza A, Swine					
Measles	(3)		(1)	(3)	(7)
Meningococcal infection	(4)	(2)		(4)	(10)
Mumps	(2)	(8)		(7)	(15)
Pertussis (Whooping Cough)	(79)	(218)	(2)	(203)	(502)
Pneumococcal infection		(7)		(1)	(8)
Poliovirus infection					
Rabies		(2)		(18)	(20)
Rubella	(3)	(1)			(4)
Smallpox					
Tetanus					
Tuberculosis	(137)				(137)
Typhoid Fever					
Varicella / Herpes Zoster	(66)		(8)		(74)
Yellow Fever					

HPZone Dashboard**Select View****Select View**
Foreign Country**Select Location**
All**Select Period**
Current Year**Select Filter**
None selected**Select Context**
None selected[Dashboard Home](#)

Object Reports

Situations

- [by Date of Declaration](#)
- [by Date of Entry](#)

Cases

- [by Date of Onset](#)
- [by Date of Entry](#)

Summary Reports

Context Activity Reports

- [Foreign Country](#)
- [Foreign Location](#)
- [Pre-school Nursery](#)
- [School](#)
- [College/University](#)
- [Hospital](#)
- [Care Home](#)
- [Prison/Defention Centre](#)
- [Restaurant/Food Outlet](#)
- [Workplace](#)
- [Visitor Attraction](#)
- [Congregation](#)
- [Environmental Exposure](#)

Case Activity Reports

- [Analyse by Diagnose and Unit](#)
- [Analyse by Diagnose and Municipality](#)
- [Analyse by Infection and Unit](#)
- [Analyse by Infection and Municipality](#)
- [Analyse by Agent and Unit](#)
- [Analyse by Agent and Municipality](#)
- [Analyse by Notifiable Disease and Unit](#)
- [Analyse by Vaccine Preventable Diseases and Unit](#)
- [Analyse by Gastro-enteric Diseases and Unit](#)

Foreign Country (32) [Set Focus](#)[Show Export Options](#) [Save Report](#) [Print](#)

Name	Enquiries	Cases	Situations
Afghanistan			(1)
Brazilië		(1)	
China	(1)	(2)	
Duitsland			
Egypte	(1)		
Eritrea		(1)	
Frankrijk			
Gambia		(1)	
Ghana		(1)	
Griekenland		(1)	
India	(1)	(1)	
Indonesië			(1)
Italië		(1)	
Ivorkust		(1)	
Kenia	(1)	(1)	
Marokko		(1)	
Mongolië		(1)	
Nederland		(2)	
Oeganda	(1)		(1)
Oekraïne		(1)	
Oostenrijk			
Portugal		(1)	
Roemenië		(1)	
Rusland		(1)	
Spanje	(1)	(1)	
Thailand		(6)	
Tunesië		(1)	
Turkije		(1)	
Verenigd Koninkrijk			
Verenigde Arabische Emiraten	(1)		
Verenigde Staten van Amerika			
Vietnam		(1)	

HPZone Dashboard

Select View

Select View
Foreign Country

Select Location
All

Select Period
Current Year

Select Filter
None selected

Select Context
None selected

Dashboard Home

Object Reports

Situations

byDate of Declaration

byDate of Entry

Cases

byDate of Onset

byDate of Entry

Summary Reports

Context Activity Reports

Foreign Country

Foreign Location

Pre-school Nursery

School

College/University

Hospital

Care Home

Prison/Detention Centre

Restaurant/Food Outlet

Workplace

Visitor Attraction

Congregation

Environmental Exposure

Case Activity Reports

Analyse byDiagnosis and Unit

Analyse byDiagnosis and Municipality

Analyse byInfection and Unit

Analyse byInfection and Municipality

Analyse byAgent and Unit

Analyse byAgent and Municipality

Analyse byNotifiable Disease and Unit

Analyse byVaccine Preventable Diseases and Unit

Analyse byGastro-enteric Diseases and Unit

Cases: Thailand: Cases (6)

Show Map

Show Export Options

Save Report

Print

Identifier	Pri	Diagnosis	Confidence	Age (yrs)	Age (mths)	Gender	Date of Onset	Postcode	Unit
ZLG/C13.53107		Legionnaires Disease	Confirmed	74	0	Male	11/01/2013	8133 VK	Zuid Limburg
ZLG/C13.54089		Rabies	Possible	6	0	Female	12/02/2013	8181 NX	Zuid Limburg
ZLG/C13.57539		Rabies	Possible	58	0	Male		8333 AL	Zuid Limburg
ZLG/C13.59510		Rabies	Possible	33	0	Female	16/08/2013	8221 JJ	Zuid Limburg
ZLG/C13.61039		Chronic hepatitis B	Confirmed	35	0	Female		8217 LS	Zuid Limburg
ZLG/C13.62896		Rabies	Possible	28	0	Male	13/11/2013		Zuid Limburg

HPZone Dashboard**Select View****Select View**

Foreign Country

**Select Location**

All

**Select Period**

Current Year

**Select Filter**

None selected

**Select Context**

None selected

[Dashboard Home](#)

Object Reports

Situations[by Date of Declaration](#)[by Date of Entry](#)**Cases**[by Date of Onset](#)[by Date of Entry](#)

Summary Reports

Context Activity Reports[Foreign Country](#)[Foreign Location](#)[Pre-school Nursery](#)[School](#)[College/University](#)[Hospital](#)[Care Home](#)[Prison/Defention Centre](#)[Restaurant/Food Outlet](#)[Workplace](#)[Visitor Attraction](#)[Congregation](#)[Environmental Exposure](#)**Case Activity Reports**[Analyse by Diagnose and Unit](#)[Analyse by Diagnose and Municipality](#)[Analyse by Infection and Unit](#)[Analyse by Infection and Municipality](#)[Analyse by Agent and Unit](#)[Analyse by Agent and Municipality](#)[Analyse by Notifiable Disease and Unit](#)[Analyse by Vaccine Preventable Diseases and Unit](#)[Analyse by Gastro-enteric Diseases and Unit](#)**Foreign Country (32)** **Set Focus**[Show Export Options](#) [Save Report](#) [Print](#)

Name	Enquiries	Cases	Situations
Afghanistan			(1)
Brazilië		(1)	
China	(1)	(2)	
Duitsland			
Egypte	(1)		
Eritrea		(1)	
Frankrijk			
Gambia		(1)	
Ghana		(1)	
Griekenland		(1)	
India	(1)	(1)	
Indonesië			(1)
Italië		(1)	
Ivoorkust		(1)	
Kenia	(1)	(1)	
Marokko		(1)	
Mongolië		(1)	
Nederland		(2)	
Oeganda	(1)		(1)
Oekraïne		(1)	
Oostenrijk			
Portugal		(1)	
Roemenië		(1)	
Rusland		(1)	
Spanje	(1)	(1)	
Thailand		(6)	
Tunesië		(1)	
Turkije		(1)	
Verenigd Koninkrijk			
Verenigde Arabische Emiraten	(1)		
Verenigde Staten van Amerika			
Vietnam		(1)	

HPZone Report: Henriette ter Waarbeek - Windows Internet Explorer

https://hpzonenl.in-fact.com/development/start.aspx?VERSION=HPZONE.DASHBOARD&SCREENWIDTH=1268&USERNAME=Henriette ter Waarbeek

HPZone Dashboard

Select View

Dashboard Home

Object Reports

Situations

Cases

Summary Reports

Context Activity Reports

Case Activity Reports

Select View

Foreign Country

Select Location

All

Select Period

Current Year

Select Filter

None selected

Select Context

None selected

Country

Print

Back

Thailand

All cases associated with this context (12)

Name	Type	Infection	Confidence	Entered	Unit
ZLG/C13.62896	Case	Rabies	Possible	14/11/2013	Zuid Limburg
ZLG/C13.61039	Case	Hepatitis B	Confirmed	27/09/2013	Zuid Limburg
ZLG/C13.59510	Case	Rabies	Possible	19/08/2013	Zuid Limburg
ZLG/C13.57539	Case	Rabies	Possible	21/06/2013	Zuid Limburg
ZLG/C13.54089	Case	Rabies	Possible	19/02/2013	Zuid Limburg
ZLG/C13.53107	Case	Legionellosis	Confirmed	15/01/2013	Zuid Limburg
ZLG/C12.47619	Case	Rabies	Possible	13/08/2012	Zuid Limburg
ZLG/C12.38615	Case	Malaria	Confirmed	20/01/2012	Zuid Limburg
ZLG/C11.33353	Case	Pertussis (Whooping Cough)	Confirmed	17/08/2011	Zuid Limburg
ZLG/C10.16782	Case	Hepatitis B	Confirmed	15/12/2010	Zuid Limburg
ZLG/C10.15315	Case	Rabies	Possible	12/10/2010	Zuid Limburg
ZLG/C10.15312	Case	Rabies	Possible	12/10/2010	Zuid Limburg

All situations associated with this context (None)

All enquiries associated with this context (1)

Foreign Country

Foreign Location

Pre-school Nursery

School

College/University

Hospital

Care Home

Prison/Detention Centre

Restaurant/Food Outlet

Workplace

Visitor Attraction

Congregation

Environmental Exposure

Analyse by Diagnose and Unit

Analyse by Diagnose and Municipality

Analyse by Infection and Unit

Analyse by Infection and Municipality

Analyse by Agent and Unit

Analyse by Agent and Municipality

Analyse by Notifiable Disease and Unit

Analyse by Vaccine Preventable Diseases and Unit

Analyse by Gastro-enteric Diseases and Unit

75%

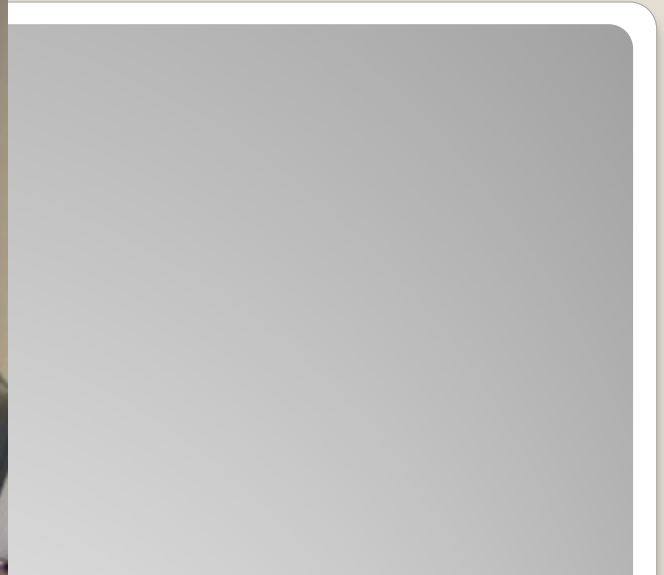
How can we test and evaluate the instruments we have developed?

Can we test the ability of the Public Health Services in the Netherlands, Germany and Belgium to cooperate in infectious diseases control, and to respond to a cross-border outbreak?

Table Top Simulation Exercise

- with three groups of participants representing the crossborder areas in the Netherlands, Germany and Belgium
- emphasizing the cross-border communications, information exchange processes and cooperation
- based on a number of timed exercise inserts simulating the incident as it evolves in time
- by using group discussions, protocols and the instruments developed to make decisions and take actions
- including evaluation, feedback and recommendations

Time bound cross-border hepatitis A outbreak simulation



- Cross-border cooperation is essential but complex
- The instruments developed are useful tools
- Sharing data in realtime is key (eg cross-border dashboard)
- Structured cooperation within a cross-border project should be continued
- A cross-border exercise should be conducted yearly

Exercise Conclusion

- Pandemic preparedness
- Euregional cross-border infectious disease control
- Cross-border network
 - Knowing each other
 - Contact details
- Structured cooperation
 - Meetings and workshops with clear outcomes
- Cross-border protocols and instruments
 - Agreed common tools being used
- Cross-border Dashboard
 - Up-to-date cross-border infection information visualized
- Crossborder-Exercise
 - Practice, evaluation and lessons-learned

Discussion

WVG Vlaanderen

Dr. Anmarie Forier

Gesundheitsamt Städteregion Aachen

Dr. med. Hermann Freund

Dr. med. Verena Bochat

Gesundheitsamt Kreis Heinsberg

Dr. med. Karl-Heinz Felhoff

Dr. med. Marita Stawinoga

Kreis Euskirchen

Dr. med. Klaus Ullman

Dr. med. Bernard Zimmer

GGD Zuid Limburg

Drs. Henriëtte ter Waarbeek

Drs. Frank Klaassen

Prof. Dr. Christian Hoebe

Drs. Volker Hackert

Carlijn Soomers

Rick Boesten

Helen Sijstermans

inFact Ltd

Dr. Chakib Kara-Zaïtri

EMRIC+

Marian Ramakers

Acknowledgements Projectgroup

“Cross-border cooperation on infectious disease control: EMRIC+ project results”

Henriëtte ter Waarbeek



provincie limburg

